



1

About the Institution

- I. Name of the Institution**
MUSLIM ASSOCIATION
COLLEGE OF ENGINEERING
 Venjaramood,
 THIRUVANANTHAPURAM (Dist)
 Pin - 695607
 KERALA
 Phone No: 0472-2870786 / 2871786/
 2875274 Fax : 0472-2870786
 E-Mail: principalmace@yahoo.com
 www.macev.org

Brief History and Vision

Muslim Association College of Engineering, (MACE) Venjaramoodu, Trivandrum District is managed by the Muslim Association, Nandavanam, Trivandrum founded in 1956 on the initiative of a band of enlightened citizens of the capital city of the State of Kerala. The Muslim Association through the years has grown into one of the premier cultural organizations of the state whose contributions to the cause of education has been widely acknowledged. The Association's main asset has always been a fast growing fraternity of enlightened members, many of whom occupy prominent positions in professions, civil services, business, social and cultural fields. It is their joint and dedicated work that has taken the Association forward within a short period, providing access to high quality education to all, particularly, the members of the Muslim community who are still lagging behind in the sphere of education.

MACE is yet another milestone in the Association's march ahead to the goal.

Along with providing education, OUR VISION is to mould a generation of young men and women whose commitment to their profession is unswerving and whose personal development is balanced and well-integrated. Our academic programmes and life on the campus are so planned as to give them profound knowledge of the subject of study and a sense of responsibility to the society to which they belong.

- II. Name & Address of the Chairman**
 Haji.Mohammed Abdul
 Khader (Alfa)
 Arafa, TC. 41/12,
 Manacaud.P.O Trivandrum-9
- III. Name of the Affiliating University**
 - Kerala University
- IV. Governance**
- ❖ Members of the Board and their brief background.



Managing Council acting as the Governing Body of the College

1. Chairman

Haji.Mohammed Abdul Khader (Alfa)
Arafa, TC. 41/12, Manacaud.P.O
Trivandrum-9 Industrialist

2. Secretary

Jb.A.Mohammed Khan. IPS (Rtd.)
Thangamangalath, TC 5/424/2
Indira Nagar, Peorkada.P.O,
Trivandrum -5 Retd SP

3. Treasurer

Al-Haj.A Shahul Hammed (National)
Naji Villa, MC Street, Balaramapuram.
Thiruvananthapuram Dt. Industrialist

4. Prof.S.Meeran Maluk Mohammed
Jameelath, Paris Road,
Trivandrum-14

Rtd Registrar

5. Jb.Basheer.M (Kunnil)
6-K, Saraswathy Nilayam, Kawdiar,
Thiruvananthapuram-3

Educationist

6. Adv.m.M. Hussain
Minnath, Pipe Lane Road, Ambalamukku,
Peroorkada.P.O,. Trivandrum- 5

Advocate

7. Jb.M.Abdul Rahim
Malayam, Near LMA LPS, Nedumangad.P.O
Thiruvananthapuram-695541

Bank Employee

8. Jb.A,Abdul Rasheed
Rijas Villa, Venjaramoodu
Thiruvananthapuram-695607

Industrialist

1. DR.M.Safarulla
Savera, TC.4/1049, PC Lane. Kawdiar,
Thiruvananthapuram

Medical Practitioner

10. Haji.A.A. Salam
Bismi, Palace Road, Thevally,
Near Market Jn., Kollam

Industrialist

11. Jb.A.Avukkaru Kunju
TC.3/2473, Simi, T.K.Divakaran Road

Rtd. KSEB Employee



Pattom.P.O, Trivandrum -4

- | | |
|--|----------------------------|
| <p>12. Jb.Nazeer Khan
Haritha, Near Block Office,
Employee
Venjaramoodu
Trivandrum Dt.</p> | <p>Co-operative Bank</p> |
| <p>13.Jb. H.M. Ibrahim
Suruma, TC.24/590, Thycaud,
Thiruvananthapuram-14</p> | <p>Engineer</p> |
| <p>14. Jb. K. Shahul Hameed
Firdous, Manjadivila Road,
Kowdiar.P.O.,
Thiruvananthapuram-3</p> | <p>Rtd Engineer</p> |
| <p>15. Jb. A.M.Salim
House No. 4. TC. 55/777. River Gardens
Niramankara, Kaimanam. P.O.,
Trivandrum</p> | <p>Industrialist</p> |
| <p>16. Haji.M.M.Shahul Hameed
Daffodils, Opp.Pareeksha Bhavan,
Poojappura, Trivandrum</p> | <p>Industrialist</p> |
| <p>17. Prof. K.Y. Muhammed Kunju
Candour Home, TC.5/1652, Ambalam Jn.
Trivandrum -3</p> | <p>Rtd. Principal</p> |
| <p>18. Jb.A.Nasar Kadayara
TC. 4/1875, Kadayara Veedu, Pandit Colony,
Kawadiar.P.O., Trivandrum – 3</p> | <p>Industrialist</p> |
| <p>19. Jb.P.M.Ahamed Kutty
Near Majestic Hall, Manacaud.P.O
Trivandrum – 9</p> | <p>Director Handicraft</p> |
| <p>20. Jb. Kayamkulam Yoonus
TC. 27/73, Swagath, MRA – 46,
Near Govt. Ophthalmic Hospital,
Trivandrum - 37</p> | <p>Engineer BSNL</p> |

❖ Members of Academic Advisory Body.

Academic Monitoring Council

1. Haji.Mohammed Abdul Khader (Alfa)
Arafa, TC. 41/12, Manacaud.P.O
Trivandrum-9



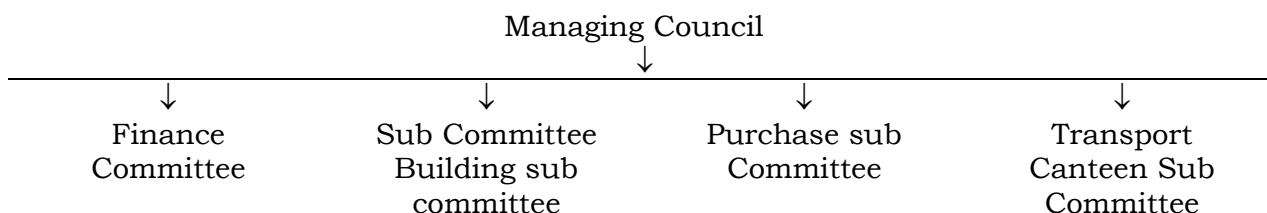
2. Jb.A.Mohammed Khan. IPS (Rtd.)
Thangamangalath, TC 5/424/2
Indira Nagar, Peoorkada.P.O,
Trivandrum -5
Ph: 2340202 (R)
3. Al-Haj.A. Shahul Hameed (National)
Naji.Villa, MC Street, Balaramapuram.
Thiruvananthapuram (Dist)
4. Dr. N.A. Karim
(Former Pro-Vice Chancellor, Kerala Uty)
H – 12 Indra Nagar, Peroorkada
Thiruvananthapuram – 695005
Ph: 2435054 (R)
4. Prof: P.O.J.Lebba
Yakeen, Asramom, Kollam
Ph: 95474-2164003 (R)
5. Dr. R.S. Moni
H.O.D, Department of Electronics and
Communication Engg, MACE, Venjaramoodu
Ph: 2475904
6. Jb. N.Abdul Basheer
(Chairman, Iqbal College Trust)
Dahlia, Chekkakonam. P.O, Karakulam,
Thiruvananthapuram
Ph: 9495550783
7. Dr. Y. Basheer Kutty
Principal, MACE, Venjaramoodu
Ph: 0472-2871786 (O)
8. Dr. K. Surendran (Prof. & HOD, MACE)
TC.14/550, Kallaravilakom, Nanthavanam,
Palayam, Thiruvananthapuram - 3
Ph: 0471-2329955 (R)
9. Prof. D.C. Wilson,
J – 19, Mandanvila Lane,
Vellayambalam, Thiruvananthapuram – 33
- 10.Jb. Basheer. M (Kunnil)
6 – K, Saraswathy Nilayam, Kawdiar,
Thiruvananthapuram – 3
Ph: 0471-2314270 (R)
- 11.Prof. S. Meeran Maluk Mohammed
Ph: 0471-2323786 (R)
President, Muslim Association



❖ Frequency of board meetings and academic advisory body

Managing council meetings: Monthly
Academic advisory body: Quarterly

❖ Organisational chart and processes



Managing Council is acting as the Governing Body of the College

- ❖ Nature and Extent of involvement of faculty and students in academic affairs/ improvements.

Leaders are nominated for every class based on the student's academic performance. Meeting of Class Leaders are held by Departments. The decision of the Department Meeting conveyed to higher authorities whenever required. Senior level faculty members guide students for their improvement in academic matters. Introduction of new systems and improvement in the existing system, etc is suggested by the department and conveyed to Principal.

- ❖ Mechanism/Norms and Procedure for democratic/good governance

Suggestions for improvement/ introduction of new policies are proposed by departments to the Principal. The Principal convenes meeting of Head of Departments, discusses the proposals in depth and the final decision conveyed to the management council for approval through secretary. Secretary intimates decision by contacting council members or convenes meeting if required.

- ❖ Students feedback on institutional governance/faculty performance

This institution is following advisory system where 30 students are looked after by a faculty member. He is keeping students records and guides the students in academic & other matters.

Students are directly contacting their advisors and informing the performance of teachers. Advisors shall be contacting the concerned HOD's and discuss the weakness of teachers and request correction.

Secondly Principal is collecting feedback of students on teachers performance in prescribed format, analyses the performance and initiate appropriate steps.

- ❖ Grievance redressal mechanism for faculty, staff and students

Faculty members intimate their grievances through HOD to Principal and Principal to Management Council. Student's grievances are conveyed to staff advisors.



V. Programmes

- ❖ Name of the Programmes (Full Time) approved by the AICTE.
 - UG Programme B.Tech degree
- ❖ Name of Programme accredited by AICTE - Nil

Details of Programme

Name	Electronics & Communication Engineering	Electrical & Electronics Engineering	Computer Science & Engineering	Information Technology	Mechanical Engineering	Civil Engineering*
Number of Seats	120	60	60	60	60	60
Duration	4 years	4 years	4 years	4 years	4 years	4 years

*commencement of the course subject to approval from University of Kerala.

- Cut off mark/rank For admission : XIIth standard or equivalent with cut off marks as prescribed by Govt. / AICTE / University
- Age : Should have completed 17 years of age on 31-12-2009
- Lateral Entry Scheme : Upto 10% of seats in excess of sanctioned strength and vacancies available in the second year classes in each branch, admission is permitted to Diploma holders directly to the 2nd year of B.Tech Courses. Admission to 50% of such excess seats is made by Govt./D.T.E and the remaining 50% by Management from the select list based on LET.
- ❖ Fee : Fees are prescribed by the Government. Prevailing rate of Tuition fee Rs.38, 700/- per annum. All SC/ST students are eligible for full fee concession as per Govt. orders.
- Placement Facilities : Available
- Campus placement : Our first batch students came out in 2005-06 only. Most students have secured placement in various companies.

❖ Campus placement in last three yrs

Placement data for 2006, 2007 & 2008 furnished



LIST OF STUDENTS WHO HAVE GOT PLACEMENT FROM MACE 2006

No	Name	Branch	Company
1	KAVITHA VARGHESE	ECE	INFOSYS
2	HAFEES HAKKIM	ECE	INFOSYS
3	ANITHA.C.NAIR	ECE	INFOSYS
4	DIPURAJ D S	ECE	SUNTECH,HUWAEI
5	RAKESH KRISHNAN G.	ECE	SLASH SUPPORT
6	FEROZ M	ECE	SLASH SUPPORT
7	ALEX STANLEY	ECE	SLAS SUPPORT
8	SAJITH DEVAN V.S	ECE	SLASH SUPPORT
9	SANDHYA P.R	ECE	SLASH SUPPORT
10	ANUP SUKUMAR	ECE	SLASH SUPPORT
11	SIMI A.	ECE	SLAS SUPPORT, US TECH, Vi MICROSYSTEM
12	SREE VIDHYA K.	ECE	Vi MICROSYSTEM
13	LEKSHMI RAVINDRAN	ECE	SLASH SUPPORT
14	ADARSH S.V	ECE	TRACE WORKS
15	ARUN PRASAD	ECE	IRIDIUM
16	PRASANTH R.	ECE	IRIDIUM
17	PRASOBH I.L	ECE	IRIDIUM
18	ZUHAIR ABDULLA.A.R	ECE	SLASH SUPPORT
19	NEERAJ ROY	ECE	SLASH SUPPORT
20	ANUSHA L C	ECE	SLASH SUPPORT
21	SAMLA SALIM	ECE	SLASH SUPPORT
22	JULIE THOMAS	ECE	SLASH SUPPORT
23	SOPHY JOHN	ECE	SLASH SUPPORT
24	DEEPTHY M D	ECE	SLASH SUPPORT
25	RESMI M R	ECE	SLASH SUPPORT
26	LEKHA RANI	ECE	SLASH SUPPORT
27	ANJANA R V	ECE	SLASH SUPPORT
28	AMBIKA ASOK KUMAR J.	ECE	ALLSEC, SLASH SUPPORT, US TECH
29	SHYAM DEV V	ECE	GEN TECH, SLASH SUPPORT
30	PRASAD.V.NAIR	CSE	L&T INFOTECH
31	REMYA THOMAS	CSE	INFOSYS
32	LEENA K	CSE	US SOFTWARE



33	PREETHA.G	CSE	US TECHNOLOGIES, SLASH SUPPORT
34	VINODINI.B.S	CSE	SLASH SUPPORT
35	SREEJITH.P	CSE	SLASH SUPPORT
36	PREETHI L.	CSE	SLASH SUPPORT
37	RAKESH S.R	CSE	Vi MICROSYSTEM
38	DIVYA S.	CSE	Vi MICROSYSTEM
39	VIJAY ANTONY	CSE	IRIDIUM
40	RAMANATHAN	CSE	IRIDIUM
41	SHINI S.H	CSE	Vi MICROSYSTEM
42	NAJM ABDUL KALAM	CSE	TRACE WORKS
43	AJIMOL MANI	CSE	TRACE WORKS
44	SAIRANI.S V	CSE	IBS
45	RANDEEP .R.NAIR	CSE	IBS,SUNTECH
46	SAJIN SIYAJ	EEE	SLASH SUPPORT
47	SANDEEP KRISHNAN P	EEE	SLASH SUPPORT
48	AYUSH.S	EEE	SLASH SUPPORT
49	REVATHY.V.S	EEE	SLASH SUPPORT
50	NEETHU.P	EEE	SLASH SUPPORT
51	SUMAYYA BEEVI. A	EEE	SLASH SUPPORT
52	NARMADA.J	EEE	SLASH SUPPORT
53	PRASHANTH MENON	EEE	SLASH SUPPORT, BAJAJ ALLIANCE
54	HEMALATHA.M	EEE	INFOSYS
55	PRAMOD MOHAN	EEE	INFOSYS
56	AISHWARYA.G	EEE	INFOSYS
57	BISWAS PADMAN	EEE	INFOSYS
58	PRASANTH V	EEE	US TECHNOLOGIES
59	ANTO DOMINIC	EEE	SLAS SUPPORT, US TECHNOLOGY
60	MUKESH KUMAR M.	EEE	Vi MICROSYSTEM
61	ANZY SALAM	EEE	Vi MICROSYSTEM
62	KHURSHIDA HASSAN	EEE	Vi MICROSYSTEM
63	KAVITHA M.	EEE	IRIDIUM
64	NEETHU M.	EEE	IRIDIUM
65	NAVNEETH.M.S	IT	SLASH SUPPORT,BAJAJ ALLIANCE, US TECH
66	ANU.S	IT	SLASH SUPPORT, BAJAJ ALLIANCE



67	AJITH.G	IT	SLASH SUPPORT
68	ATHIRA R NAIR	IT	SLASH SUPPORT
69	DIVYA G NAIR	IT	SLASH SUPPORT, US TECH
70	SOUMYA .V.V	IT	SLASH SUPPORT
71	DHANESH KUMAR.R.O	IT	SLASH SUPPORT
72	MADHU KRISHNAN.G	IT	SLASH SUPPORT
73	SHABNA AHAMED	IT	SLASH SUPPORT
74	BISMI. M	IT	SLASH SUPPORT
75	FATHIMA M SUBEIR	IT	SLASH SUPPORT
76	ARATHI PILLAI M	IT	SUTHERLAND, US TECH
77	PRAVEENA M	IT	NEST TECHNOLOGIES
78	SEENA S.S	IT	SLASH SUPPORT
79	GOKUL N.	IT	US TECH
80	RAMYA S.R	IT	ALL SEC, IRIDIUM
81	POOJA V.S	IT	SLAS SUPPORT
82	SIKHA B.G.	IT	IRIDIUM
83	SUHARA	IT	IRIDIUM
84	UNNI KRISHNAN.H	IT	BAJAJ ALLIANCE, US TECH
85	ABHEESH.S	CS	TATA ELSI
86	RAMANATHAN.P	CS	IRIDIUM
87	NAJMA ABDULKALAM	CS	ALLSEC
88	DHANESH KUMAR.P.O	IT	CARITOR
89	SHEENU VYSHALL.S.S	IT	IRIDIUM

JOBS OFFERED :

STUDENTS PLACED: 89

SALARY DETAILS OF STUDENTS PLACED IN VARIOUS COMPANIES

Minimum salary drawn = Rs. 14,583 /month (Rs 1.7 lakhs/year)

Maximum salary drawn = Rs. 31,720 /month (Rs 3.7 lakhs/year)

Average salary drawn by the student = Rs. 23,151 /month (Rs. 2.8 lakhs/year)



**List of placed students
2007 Batch**

No	Name	Branch	Company
1	Parvathy Nair .G	EC	IBS
2	Anu.V.G	EC	Ernst & Young
<i>Mage</i>	Resiya	EC	Ernst & Young
4	Ajina .S	EC	Aryan's Infoway
5	Lekshmi C.P	EC	Aryan's Infoway
6	Sreeja Sreenivasan	EC	Aryan's Infoway
7	Yeji Yesu	EC	HCL Technologies
8	Vineetha Mary Mohan	EC	Slash support, HCL
9	Alif Somshitha Beegum	EC	US Tech
10	Jeena Vaheed	EC	Slash support, HCL
11	Lijitha .L	EC	CTS
12	Nitin C.S	EC	Infosys
13	Vishnu .S	EC	US Tech, CTS
14	Arun P.S	EC	US Tech
15	Syam S Pai	EC	US Tech
16	Alex K.J	EC	IBS, CTS
17	Arun Kumar	EC	Ernst & Young
18	Arun G.P	EC	Ernst & Young
19	Hareesh Menon	EC	Slash support
20	Najeeb Raffic	EC	Aryan's Infoway, HCL
21	Rosh T.S	EC	Aryan's Infoway
22	Vijith S Rajeev	EC	Aryan's Infoway
23	Deepak M.S	CS	Aryan's Infoway
24	Ganesh	CS	Slash Support, HCL
25	Gokul K.S	CS	HCL Technologies
26	Kiran	CS	Caritor
27	Jijo R Nair	CS	Aryan's Infoway
28	Nirmal Thomas	CS	Aryan's Infoway
29	Shibin .S	CS	HCL Technologies
30	Sreenath	CS	HCL Technologies
31	Venkitachalam .A	CS	US Technologies, Slash Support
32	Vivek	CS	IBS
33	Aparna A.V	CS	IBS
34	Aswathy P.M	CS	Slash Support
35	Divya S Nair	CS	Infosys
36	Harsha .P	CS	Caritor
37	Lekshmi C.L	CS	CSC
38	Mehnaz Zeenath	CS	CSC
39	Anupama	CS	CTS
40	Nafiya M Rafeek	CS	Slash Support, HCL
41	Shahna M	CS	IBS
42	Sumi .S	CS	Iridium
43	Tazim .A	CS	Aryan's Infoway
44	Gigish T T	IT	Syntel
45	Abdul Azeez	IT	HCL, HCL Technologies
46	Drisyia B Nair	IT	IBS
47	Anitha Nair	IT	US Technologies
48	Nisha .K	IT	IBS
49	Nadeem Ahmed Salim	IT	HCL
50	Resmi Rajan	IT	Slash Support
51	Santhi N	IT	Irridium
52	Pracy Syam	IT	Aryan's Infoway
53	Reji K Nair	IT	Slash Support
54	Sabeena A.S	IT	Aryan's Infoway
55	Parvathy S Nair	IT	Slash Support
56	Aruna Vasanth	IT	Slash Support
57	Rajeev S.R	EE	IBS
58	Sahad	EE	Caritor



59	Arun Kumar	EE	Aryan's Infoway
60	Abhilash Chandran	EE	Infosys
61	Nazeer M.A	EE	Aryan's Infoway
62	Rahul K.S Menon	EE	HCL, Slash Support
63	Akil .T	EE	Infosys
64	Nabeel K.H	EE	HCL
65	Asif Iqbal	EE	Slash Support
66	M.Ansar .K	EE	Slash Support
67	Sibin .R	EE	US Tech
68	Anand R.L	EE	IBS, Aryan's Infoway
69	Ramesh Chand	EE	US Tech
70	Sharath Chandran	EE	IBS, L&T, Satyam
71	Jismi S J	EE	Caritor
72	Mini Mohan	EE	Caritor
73	Maya J.M	EE	US Tech
74	J.Santhya	EE	US Tech, Aryan's Infoway
75	Shini B.S	EE	Aryan's Infoway
76	Jumana P Yousouf	EE	Aryan's Infoway
77	Rinu Sarah Mathew	EE	HCL
78	Liji M raju	EE	Aryan's Infoway
79	Jazeer Mohammed Kunju	EE	Iridium
80	Renjish R	EE	Sea View
81	Prasad	EE	Sea View
82	Josna Bhaskar	EE	Slash Support
83	Sajan Matapally	EE	Slash Support, HCL
84	Reji F N	EE	Special Armed Police

List of placed students 2008 Batch

Sl. No.	Name	Batch	Company
1	Dileep R.S	S8 EC	Agile Programmers, Madras
2	Arun Chandran. R	S8 EC	Agile Programmers, Madras
3	Divya. H	S8 EC	Agile Programmers, Madras
4	Najmi. A	S8 EC	Agile Programmers, Madras
5	Radhika. R	S8 EC	Agile Programmers, Madras
6	Nebu Varghese	S8 EC	HCL, Technologies
7	Gopika Krishnan	S8 EC	Slash Support Technology, Madras, New Technologies, TVPM
8	Hyfa Ibrahim	S8 EC	Nano Technologies, Trivandrum
9	Tasneem Basheer	S8 EC	Nano Technologies, Trivandrum



10	Novya S.R	S8 EC	Nano Technologies, Trivandrum
11	Remya Lawrance	S8 EC	caritor
12	Hridya	S8 EC	caritor
13	Soumya	S8 EC	Syntel Inc.
14	Ponni Mohandas	S8 EC	Infosys, L&T infotech
15	Murali Krishnan	S8 EC	Infosys, L&T infotech
16	Vrinda Vijayan	S8 EC	Accenture, IBS
17	Sindhu Namboodiri	S8 CS	Infovista, Kochi
18	Divya S Kumar	S8 CS	Infovista, Kochi
19	Sumesh R Nair	S8 CS	Nanotechnologies, Trivandrum
20	Pratheesh Prem	S8 CS	Pivot, Technopark
21	Binitha K. J	S8 CS	UST, Technopark
22	Prateesh S Kumar	S8 EE	Infosys, Caritor
23	Sandeep Sivan. S	S8 EE	Synter
24	Aparna Mohan	S8 EE	U.S. Technology, Caritor
25	Athira C.L	S8 EE	Slash Support
26	Jesni P.A	S8 EE	U.S. Technology, Accenture
27	Sreeja R.S	S8 EE	Caritor
28	Sreeja .S. Nair	S8 EE	U.S. Technology

LIST OF STUDENTS WHO HAVE GOT PLACEMENT

No	Name	Branch	Company
1	HEMALATHA.M	EEE	INFOSYS
2	PRAMOD MOHAN	EEE	INFOSYS
3	AISHWARYA.G	EEE	INFOSYS
4	KAVITHA VARGHESE	ECE	INFOSYS
5	HAFEES HAKKIM	ECE	INFOSYS
6	ANITHA.C.NAIR	ECE	INFOSYS
7	REMYA THOMAS	CSE	INFOSYS
8	BISWAS PADMAN	EEE	i-GATE
9	DIPURAJ	ECE	SUNTECH,HUWAEI
10	PRASAD.V.NAIR	CSE	L&T INFOTECH
11	SAIRANI	CSE	IBS
12	RANDEEP.R.NAIR	CSE	IBS, SUNTECH
13	LEENA.K	CSE	US SOFTWARE, SLASH SUPPORT
14	PRASANTH.V	EEE	US TECHNOLOGIES
15	PREETHA.G	CSE	US TECHNOLOGIES, SLASH SUPPORT
16	PRAVEENA	IT	NEST TECHNOLOGIES
17	AMBIKA ASOK KUMAR	ECE	ALLSEC, SLASH SUPPORT, US TECH
18	SHYAM DEV	ECE	GENPACT, SLASH SUPPORT
19	ARATHI PILLAI	IT	SUTHERLAND, US TECH
20	RAKESH KRISHNAN	ECE	SLASH SUPPORT
21	FIROZ.M	ECE	SLASH SUPPORT
22	ZUHAIR ABDULLAH	ECE	SLASH SUPPORT



23	NEERAJ ROY	ECE	SLASH SUPPORT
24	ANUSHA.L.C	ECE	SLASH SUPPORT
25	SAMLA SALIM	ECE	SLASH SUPPORT
26	JULIE THOMAS	ECE	SLASH SUPPORT
27	SOPHY JOHN	ECE	SLASH SUPPORT
28	DEEPTHY.M.D	ECE	SLASH SUPPORT
29	RESHMI.M.R	ECE	SLASH SUPPORT
30	LEKHA RANI	ECE	SLASH SUPPORT
31	ANJANA	ECE	SLASH SUPPORT
32	SAJIN SIYAJ	EEE	SLASH SUPPORT
33	SANDEEP KRISHNAN	EEE	SLASH SUPPORT
34	AYUSH	EEE	SLASH SUPPORT
35	REVATHY	EEE	SLASH SUPPORT
36	NEETHU.P	EEE	SLASH SUPPORT
37	SUMAYYA	EEE	SLASH SUPPORT
38	NARMADA	EEE	SLASH SUPPORT
39	PRASANTH MENON	EEE	SLASH SUPPORT, BAJAJ ALLIANCE
40	VINODINI.B.S	CSE	SLASH SUPPORT
41	SREEJITH.P	CSE	SLASH SUPPORT
42	NAVNEET.M.S	IT	SLASH SUPPORT, BAJAJ ALLIANCE, US TECH
43	ANU.S	IT	SLASH SUPPORT, BAJAJ ALLIANCE
44	AJITH.G	IT	SLASH SUPPORT
45	ATHIRA.R.NAIR	IT	SLASH SUPPORT
46	DIVYA.G.NAIR	IT	SLASH SUPPORT,US TECH
47	SOUMYA.V.V	IT	SLASH SUPPORT
48	DHANESH KUMAR.R.O	IT	SLASH SUPPORT
49	MADHU KRISHNAN	IT	SLASH SUPPORT
50	SHABNA AHAMED	IT	SLASH SUPPORT
51	BISMI	IT	SLASH SUPPORT
52	FATHIMA SUBAIR	IT	SLASH SUPPORT
53	UNNI KRISHNAN.H	IT	BAJAJ ALLIANCE, US TECH



VI. FACULTY

- ❖ Number of faculty members:

Details of Faculty Members

division obtained, experience, date of joining and pay scale (programme wise).

Name of the course	Sl.No	Name (s) of the teaching faculty	Designation (Lecturer/Asst. Professor/ Professor)	Qualifications with specialization			Date of Birth	Experience
				UG	PG	Doctorate		
				1	Dr. Y Basheer Kutty	Principal		
UG Level ECE	2	Dr. R.S Moni	Professor & HOD	B.Sc Engg	M.Tech	Ph.D	17-Nov-46	35 Years
	3	Arsha.A.R	Lecturer	B.Tech	M.Tech		1-May-82	3 yrs 8 ms
	4	Anas Mohammed Basheer	Lecturer	B.Tech	M.Tech	-	12-Sep-80	3 yrs 8 ms
	5	Sameer Kamarudeen	Sr. Lecturer	B.Tech	M.Tech	-	26-Aug-79	2 yrs 8ms
	6	Sajina. S	Lecturer	B.Tech	-	-	20-May-81	4 Yrs
	7	Najeeb.A	Lecturer	B.Tech	-	-	20-May-84	2 yrs 5 ms
	8	Sajin.C.S	Lecturer	B.Tech	-	-	13-Dec-78	1 Yr 10 Ms
	9	Suja Sundaram	Lecturer	B.Tech	-	-	22-Apr-82	1 Yr 5 Ms
	ECE	10	Sabeena.S	Lecturer	B.Tech	-	-	18-May-83
11		Ajith.S.S	Lecturer	B.Tech	-	-	30-May-85	1 Yr
12		Samla Salim	Lecturer	B.Tech	-	-	20-Mar-84	1 Yr



	13	Sareena.R	Lecturer	B.Tech	-	-	13-Apr-83	10 Ms
	14	Sibu Raj.D.S	Lecturer	B.Tech	-	-	26-Mar-87	10 Ms
	15	Resmi.B	Lecturer	B.Tech			3-May-87	10 Ms
	16	Renjith.R.J	Lecturer	B.Tech	-	-	31-May-84	1 m
	17	Shalitha Nazer	Lecturer	B.Tech	-	-	26-May-86	1m
	18	V.L Muraleekrishnan	Lecturer	B.Tech	-	-	28-Apr-87	1m
	19	Jasmin Hyder.H	Lecturer	B.Tech	-	-	2-May-85	1m
EEE	20	Dr. N. Kesavan Nair	HOD	B.Sc Engg	M.Sc Engg	Ph.D	8-May-42	11 Ms
	21	Shahina.T.N	Lecturer	B.Tech	-	-	31-May-78	6 yrs 10ms
	22	Asha.A.K	Lecturer	B.Tech	-	-	28-May-83	4 yrs
	23	Shahida.L.R	Lecturer	B.Tech	-	-	8-Arp-84	3 yrs
	24	Khurshida Hassan	Lecturer	B.Tech	-	-	26-Jul-84	2 Yrs 6 ms
	25	Mini Mol. H	Lecturer	B.Tech	-	-	23-Mar-85	2 Yrs
	26	Ramzeena.A.K	Lecturer	B.Tech	-	-	17-Mar-86	1 Yr 5 ms
	27	Shajina Basheer	Lecturer	B.Tech	-	-	26-Jun-85	1 Yr 4 ms
	28	Jithesh.S.R	Lecturer	B.Tech	-	-	18-Mar-85	1 Yr 4 ms
	29	Prem Lakshmi K Nair	Lecturer	B.Tech	-	-	14-Oct-79	1 Yr
EEE	30	Sreena Sreekumar (On Maternity leave)	Lecturer	B.Tech			23-Feb-79	10 Ms
	31	Arun.M.S	Lecturer	B.Tech	M.Tech		22-Jan-85	6 ms



CSE	32	R. Muraleedharan	HOD CSE	B.Sc	M.Sc		2-Apr-43	42 yrs
	33	Riji.R	Lecturer	B.Tech	-	-	30-May-82	4 yrs 6 ms
	34	Shimja.M	Lecturer	B.Tech	M.Tech	-	20-Sep-82	4 yrs 3 ms
	35	Rashida.R	Lecturer	B.Tech	-	-	27-May-83	3 yrs
	36	Amisha.N (On Maternity Leave)	Lecturer	B.Tech	-	-	28-Jun-83	2 Yrs
	37	Ani.S.	Lecturer	B.Tech	-	-	6-May-85	2 Yrs
	38	Jasmin.S	Lecturer	B.Tech	-	-	19-Jan-85	1 Yrs 10 Ms
	39	Sabna. S	Lecturer	B.Tech	-	-	30-May-85	1 Yr 10 Ms
CSE	40	Jyothi. J	Lecturer	B.Tech	-	-	28-Apr-84	1 Yr 10 Ms
	41	Fousiya. F	Lecturer	B.Tech	-	-	20-Oct-85	1 Yrs 9 Ms
	42	Remya.R.S	Lecturer	B.Tech	-	-	28-Apr-83	1 Yrs 9 Ms
	43	Mohamed Sajeer.N	Lecturer	B.Tech	M.Tech	-	30-May-84	1 Yr
IT	44	Dr. K. Surendran	Professsor & HOD	B.Sc Eng	M.E	Ph.D	23-Mar-44	42 Yrs
	45	Abhishta.K.S	Asst. Professor	B.Tech	M.E	-	30-May-78	3 Yrs 7 ms
	46	Aswathy.R	Lecturer	B.Tech	-	-	8-Sep-82	4 yrs
	47	Sreedivya.R.S	Lecturer	B.Tech	-	-	10-May-83	4 Yrs
	48	Shahila Hameed	Lecturer	B.Tech	-	-	8-Sep-84	3 Yrs
	49	Shamna.B	Lecturer	B.Tech	-	-	11-Aug-84	2 Yrs 10 Ms



IT	50	Jency.W.G	Lecturer	AMIE	ME	-	21-Feb-84	1 Yr
	51	Lekshmi.R.J	Lecturer	B.Tech			26-Feb-83	7 ms
	52	Sini.B.J	Lecturer, IT	B.Tech			21-May-82	1 Yr
	53	Dhanya.P	Lecturer	B.Tech	M.Tech		10-May-86	7 ms
	54	Arif Khan.N.T	Lecturer	B.Tech			27-Aug-86	6 ms
	55	Vivek.M	Lecturer	B.Tech			9-May-87	6 ms
ME	56	Prof. Jaleelullah.A	Professor & HOD	B.Sc Engg	M.Tech	-	18-May-44	40 Yrs
	57	Subahana. K. R	Lecturer	B.Tech	M.Tech	-	10-May-81	2 Yrs 9 ms
	58	Mohd. Aslam. A	Lecturer	B.Tech	M.Tech	-	13-Mar-77	2 Yrs 3 ms
	59	Zaina.T.M	Lecturer	B.Tech	-	-	27-Sep-82	2 Yrs 2 Ms
ME	60	Abey Arsal. I	Lecturer	B.Tech	-	-	2-May-79	2 Yrs
	61	Shamsudin.M	Lecturer	B.Tech	-	-	14-Mar-50	1 Yr
	62	Radhakrishnan.P	Lecturer	B.Tech	-	-	22-Oct-80	1 Yr 5 ms
		Gopakumar.G.S	Lecturer	B.Tech	-	-	14-Aug-83	1 Yr 4 ms
	64	Renjith.N.R	Lecturer	B.Tech	-	-	23-May-84	1 Yr 1 m
	65	R.Vivek	Lecturer	B.Tech			29-Dec-86	7 ms
	66	Subin Najeeb	Lecturer	B.Tech			24-May-86	4 ms
	67	Rahul.R.S	Lecturer	B.Tech	-	-	31-May-86	1 m



VII. Profile of Principal with qualifications, total experience, age and duration of employment at the institute concerned.

Name : Dr. Y. Basheer Kutty
 Date of Birth : 26-10-1945
 Academic qualifications (with field of specialization)

B.Sc, (Engg.)
 M.Tech
 Ph.D
 Mechanical Engg.



Details of Experience (Academic / Industrial) :

Teaching : : 40 Years

Lecturer : : T.K.M. College of Engg., Kollam : 12 Years

Assistatn Professor : : T.K.M. College of Engg., Kollam : 9

Years

Professor : : T.K.M. College of Engg., Kollam : 7 Years

Principal : : T.K.M. College of Engg., Kollam : 4 Years

Principal : : National College of Engineering, Tirunelveli : 4

Years

Principal : : Muslim Association College of Engineering,
 Venjaramood : 4 Years

Area of Specialization : Mechanical Engineering

Subjects Teaching at Under Graduate Level : Mechanical
 Engineering

Post Graduate Level : Production Engineering

Research Guidance : Co-guide for one PhD Programme

No. of papers published in
 National Journals - Nil

International Journals – 2
 Conferences – 2

Projects Carried out - B.Tech and M.Tech

Patents – Nil

Technology Transfer – Nil

Research Publications – 4

No. of Books published with details – Nil



VIII. FEE(for the year 2009-2010)



Details Fee as approved by state fee committee			
		50% seats under	50% seats under
		State Merit	Management Quota
Admission Fee	-	Rs 100/-	Rs 100/-
Tuition Fee	-	Rs 35,000/-	Rs 70,000/-
Kerala University Spl.Fee	-	Rs 465/-	Rs 465/-
Caution Deposit	-	Rs 5,000/-	Rs 10,000/-

- ❖ Time schedule for payment of fee for the entire programme.

All fees to be paid at the beginning of each academic year during the period of the course

- ❖ Fee waivers granted with amount and name of students.

No of fee waivers granted with amount and name of students **For the Years /2005-06/2006-2007**

Sl.No	Name of student	Class	Course	Full fee (Rs)	Amount fee waived (Rs)	Reduced Fee Payable (Rs)
Year 2005-06						
1	Harishankar U S	S1S2	ME	38,700/-	19350/-	19350/-
2	Ahamed Ansar	S1S2	EC	38,700/-	19350/-	19350/-
3	Sumitha Maheen	S1S2	EE	38,700/-	23700/-	15000/-
4	E.S.Jimsitha	S1S2	EE	38,700/-	28,700/-	10000/-
5	Lizana B S	S1S2	EE	38700/-	28700/-	10000/-
6	Niyas S N	S1S2	EE	38700/-	19350/-	19350/-
7	Rasina	S1S2	CS	38700/-	19350 /-	19350 /-
8	Khaja Peer Alikhan	S1S2	EC	38700/-	19350/-	19350/-
9	Shafeeque S	S1S2	EE	38700/-	19350/-	19350/-
10	Sajna B	S1S2	EE	38700/-	28700/-	10000/-
11	Safa Mol	S1S2	EC	38700/-	13700/-	25000/-
12	Renjish R	S5S6	IT	38700/-	19350/-	19350/-
13	Shameer E	S5S6	IT	38700/-	19350/-	19350/-
14	Firos S	S1S2	ME	38700 /-	23700/-	15000/-
15	Varun Krishnan	S3S4	EC	38700/-	19350/-	19350/-
16	Shankar A	S4S5	EE	38700/-	19350/-	19350/-

Year 2006 – 2007

1	Shamshad M.S	S1S2	EC	38,700/-	19,350/-	19,350/-
2	Shifansha	S1S2	EC	38,700/-	19,350/-	19,350/-



3	Abdul Shukoor	S2S3	IT	38,700/-	19,350/-	19,350/-
4	Thariqmon	S1S2	EC	38,700/-	19,350/-	19,350/-
5	Najiya A.R	S1S2	CS	38,700/-	12000/-	26,700/-
6	A.V.Naseem Marikar	S1S2	ME	38,700/-	19,350/-	19,350/-
7	Shamsheer	S1S2	EE	38,700/-	25,000/-	13,700/-
8	Ruksana Salam	S3S4	CS	38,700/-	19,350/-	19,350/-
9	Shijina Beegam	S3S4	EE	38,700/-	19,350/-	19,350/-
10	Jasmine J	S3S4	EE	38,700/-	19,350/-	19,350/-
11	Jasmine S	S3S4	EE	38,700/-	19,350/-	19,350/-

Year 2007-08

1.	Abdul Basith .A	S1S2	EC	38,700/-	38,700/-	NIL
2.	Anzeem S.N	S1S2	EC	38,700/-	38,700/-	NIL
3.	Jasiya Jaffar	S1S2	EC	38,700/-	38,700/-	NIL
4.	Mohammed Shameer	S1S2	EC	38,700/-	38,700/-	NIL
5.	Sareena .S	S1S2	EC	38,700/-	38,700/-	NIL
6.	Hameetha Beevi. M	S1S2	EE	38,700/-	38,700/-	NIL
7.	Shafeena .S	S1S2	CS	38,700/-	38,700/-	NIL
8.	Surumi. T	S1S2	CS	38,700/-	38,700/-	NIL
9.	Ancy M.S	S1S2	IT	38,700/-	38,700/-	NIL
10.	Sanil Kamal	S1S2	IT	38,700/-	38,700/-	NIL
11.	Shamna .N	S1S2	IT	38,700/-	38,700/-	NIL

Remarks : The waiver in fees granted will continue till the course is over

- ❖ Number of scholarships offered by the institute with the name of students, duration and amount.
Nil
- ❖ Criteria for fee waivers/scholarships.
Social and Economic Backwardness
- ❖ Estimated cost of boarding and Lodging in Hostels.
Rs.1960 per month

IX. ADMISSION

- ❖ Number of seats sanctioned with the year of approval.
120 Seats in ECE and 60 each in EEE, CSE, IT and ME
- ❖ Number of students admitted under various categories each year in the last three years.

Year	Admission Under		
	Govt. Quota	Management Quota	Total
2006-2007	137	163	300
2007-2008	105	199	304



2008-2009			
-----------	--	--	--

- ❖ Number of applications received during last two years.

Year	Application Received	No. Admitted
2007-2008	850	199
2008-2009		

14

X. ADMISSION PROCEDURE

- ❖ Mention the admission test being followed, name and address of the Test Agency and its URL (website).

The Common Entrance Test conducted by the Commissioner of Entrance Examinations, Kerala. www.cee-kerala.org

- ❖ Number of seats allotted to different Test Qualified candidates CAT, MAT, XAT, JMET, ATMA, CET, JEE (State conducted tests / University tests).
 - Govt. Quota : 50% of the sanctioned intake.
 - Management Quota : 50% of the sanctioned intake.
- ❖ Calendar for Admission Management/management vacant seats for 2009-2010
 - Last date for request for applications. -08-06-2009
 - Last date for submission of application -16-06-2009
 - Publication of admission list -01-07-2009
 - Date for acceptance by the candidate -09-07-2009
 - Closure of Admission
 - Starting of the Academic session. -13-08-2009

XI. CRITERIA AND WEIGHTAGES FOR ADMISSION

Mark obtained in Entrance Exam 2009 conducted by Kerala Government
+ Marks obtained in std XII.

- ❖ Minimum level of acceptance :50% of marks in Maths and over all .50 % of marks in basic science viz, Maths ,Physics and Chemistry or Computer Engineering in the qualifying examination put together.



2

Departmental Programmes

I. COURSES OFFERED

1. B.Tech in Mechanical Engineering (8 Semesters) Intake- 60 per year
2. B.Tech in Electrical & Electronics Engg. (8 Semesters) Intake-60 per year
3. B.Tech in Electronics & Communication Engineering. (8 Semesters) Intake-60 per year
4. B.Tech in Computer Science & Engineering. (8 Semesters) Intake-60 per year
5. B.Tech in Information Technology (8 Semesters) Intake-60 per year

II. Mode of Admission and Fee Structure

1. Eligibility

A pass in the Plus-2 examination from any one of the Institutions in Kerala State or any other examination accepted as equivalent thereto with Mathematics, Physics and Chemistry as optional subjects with a minimum of 50% marks in mathematics and 50% marks in mathematics, physics and chemistry put together. Candidates under SEBC category will have a relaxation of 5% marks for Govt. /Management seats. SC/ST students require only a pass in the qualifying examination.

2. Allotment of seats

The number of students to be admitted from different categories is apportioned as follows:

- i. Govt. Merit Quota 50%
- ii. Management Quota 50%

3. Selection

The Selection of candidates will be based on Govt. regulations regarding pass in prescribed tests etc.

4. Age

The applicant should have completed **17 years of age on the 31st December 2009**. No relaxation of minimum age limit shall be permitted on any account.

5. Fees

As fixed by the Government/ University from time to time. SC/ST students are eligible for full fee concession as per the Govt. orders

6. Lateral Entry Admission in the Second year (third Semester)

10% seats in excess of sanctioned strength in each branch and the vacant seats in the Second year (Third Semester) are filled up from Diploma holders. Admission to 50%

of such excess seats is made by, Govt./D.T.E and the remaining 50% by Management from the select list based on LET. Existing Vacant seats in the second year (Third Semester) will also be filled by management from this select list.

III. Staff Advisory System

Immediately after admission to the college, each student is assigned to



a staff member, the Group Advisor, who would keep a personal profile and comprehensive computerized data base of the students; and guide the student during his course of study in the college. The group advisor is expected to give advice and guidance to the students in all curricular and co-curricular activities.

IV. Working Hours

Class Time : 09.00 am to 04.30 pm
College Office: 09.00 am to 04.30 pm

V. Attendance and Leave Regulations

Students are expected to attend all classes punctually and without fail. If for unavoidable reasons, leave of absence is required, permission from competent authority should be sought as given hereunder.

- a) Application for ordinary leave should be submitted to the HOD through the Staff Advisor concerned, the same will not be considered under any circumstances if submitted 7 days after the date of return from leave.
- b) Students may apply to the Head of Dept.s through the Staff advisor for leave on medical grounds, within 10 working days after returning from leave. A medical certificate should invariably be attached with the application. Records of medical leave sanctioned should be kept by the students. In the event of a student failing due to short of attendance at the end of a semester, condonation of shortage of attendance will be recommended if the student produces records to

show that leave has been applied for and granted in time.

- c) Students are eligible to duty leave if they perform any kind of approved duty for the college. Duty leave can be recommended by faculty members who are authorised to do so.

Duty leave application should be submitted to the Principal preferably before the duty was performed. The records of duty leave sanctioned should be shown to the respective staff members and got entered in the attendance register. This must be done before the end of the semester. The respective Group Advisor also must be informed about the duty leave granted before the end of the semester.

The duty leave is limited to a maximum of 10% of the number of working days in a semester. However, in exceptional cases (e.g., representing the University or State in Athletic events etc.) prior permission of the Principal should be obtained to get duty leave in excess of 10%. Students who do not satisfy the attendance requirements as per University regulations will not be presented for the University Examination.

VI. Discipline, Conduct and Behaviour

1. Character building is the chief aim of education and the college lays great emphasis on good character and decent behaviour from every student.
2. Students should attend classes, submit assignments, records, home works etc. and participate in other co-curricular activities of the college, in time.



3. Students coming late shall enter the class only with the permission of the teacher. No student is permitted to leave the class before the end of it.
 4. Students taking leave should address their applications for leave to the Principal and submit the same to the staff Advisor before availing leave.
 5. All students should observe their dress code in their classrooms, labs and workshops.
 6. Any act of indiscipline, which causes serious threat to the discipline in the college shall be severely dealt with.
 7. Ragging of students in any form is strictly prohibited. Students found guilty will be 'seriously dealt with which may even end up in their dismissal. The student should sign a declaration to the effect that they are aware of the penal provisions in the Ragging Act at the time of admission.
 8. In the intervals or during the unexpected absence of the teacher concerned, students should remain quiet in the classrooms.
 9. Students should not loiter in the verandahs of the college.
 10. Scribbling on the walls and desks, pasting notice or doing any other kind of damage to the college property is strictly prohibited. Students responsible for any such wanton damage will be severely dealt with.
 11. Students are forbidden from smoking and chewing inside the college premises.
 12. Students who are found using intoxicating drugs or drinks will be summarily dismissed from the college.
 13. Students should refrain from disturbing the peaceful atmosphere in the campus by indulging in sectarian activities.
 14. Students are expected to look at the notice board every day. They shall not put-up any notice except with the sanction of the Principal.
 15. For organizing any function, conference, meeting or gathering of any kind or for collecting funds from any source, students should get the prior written permission of the Principal.
 16. Activities by the students' organisations supported and sponsored by political parties are banned in campus.
 17. Mobile Phones are not permitted inside the College Buildings & Laboratories.
 18. The Principal has the absolute right to punish, suspend or dismiss any student found guilty of gross misconduct inside or outside the college campus.
 19. All the students should always possess their Identity cards/Smart cards with them.
- VII. Infrastructure Facilities**
- The following state of the art facilities are provided at present:
- Workshop**
- I. General Workshop
 - II. Electronics Workshop
 - III. Electrical Workshop



Workshops are adequately equipped and efficiently maintained with all essential facilities to impart hands on training and engineering skills.

Laboratories

The following fully equipped laboratories are functioning for the benefit of students

1. Power electronics Lab
2. Electrical machine Lab
3. Hydraulic machine Lab
4. Heat Engines Lab
5. Electrical measurement Lab &
6. Systems & Control Lab
7. Electronic Devices & Circuit Lab
8. Integrated Circuit Lab
9. Communication Engg. Lab
10. Micro processor Lab & Hardware Lab
11. Microwave & Optical Communication Lab
12. MAT Lab & DSP Lab
13. Software Lab
14. Systems Lab
15. Business Information & Internet Lab
16. Computer Graphics Lab
17. Computer Network & Web Application Lab
18. Computer Centre

Computerized Campus Administration

Campus administration is done with the help of a campus network. The administrative and academic data are kept as an integrated database in the centrally located server of the campus network. This is accessed by the client machines in the network kept at key places like Principal's room, Office, Library and Professors' room.

Internet access

The college has internet connectivity through BSNL Leased Line. The students are encouraged to download and use study materials from the net.

Transportation

The college has, nine buses plying between the campus and Thiruvananthapuram city / Kallambalam / Varkala / Kazhakkootam.

VIII. Library

The computerized library has more than 7000 volumes of different titles with multiple copies of the latest editions of standard text books. In addition to this, the library subscribes to 20 leading technical magazines and journals.

The College is an institutional member of DELNET, providing online resources such as, e-journals, e-books etc. & also offering inter-library loan & Document Delivery Services.

Library Rules

1. Students and staff of the college, as the member of the library are requested to produce their ID Card to the Librarian as and when required.
2. Library Books and other reading materials are national assets and belong to all. Hence, users are required to protect them against wanton and wilful damage, mutilation, theft and other malpractices.
3. The Library rules and regulations are framed to streamline the use of the library resources and will be reviewed periodically.
4. Working Hours of library will be 08.30 a.m. to 07.00 p.m. on all working days.
Saturdays: 09.00 a.m. to 01.00 p.m.
5. Personal books, printed documents and other belongings should be left on the property counter at the entrance before



entering into the Library.

6. Strict silence should be maintained in the library.
7. This Library follows open access system. Hence books taken out of the racks shall not be replaced. They should be left only on the table.

Lending

Lending of books will be on automated system. Three books will be issued per student at a time.

The books should be returned within 10 days from the date of issue in the case of students and 20 days in the case of staff.

Back volumes will be issued only to faculty members. They should be returned within the stipulated time.

Monthly/Weekly journal will be available only for reference and will not be issued to take home.

The staff/students are to return the books as and when they are called back by the librarian.

Before borrowing the books, the members must make sure that book lent are in good condition and the page numbers are intact.

Defects must be brought to the notice of the librarian. Otherwise the borrower is liable to be held responsible for the damages.

If a book lost or damaged is one of a set and is not separately obtainable, the member shall replace the whole set or the value thereof with a fine.

If a book is not returned in due

time, further books will not be issued. If he/she has not returned the books within two months he/she should pay the cost of the book plus fine within three days, failing which the matter will be reported to the Principal for necessary action.

Before leaving the college for summer vacation, students are advised to return the library books and library cards to the Librarian and all the dues should be cleared before obtaining the hall ticket for the final examination.

8. Reference books shall not be lent out.
9. Members shall not 'sub-lend' or allow others to use their library cards.
10. New arrivals shall be kept in a special rack for a week.

11. Loss of Cards

Loss of ID cards shall be reported to the librarian immediately. Duplicate cards will be issued on payment of Rs.25/- on request.

Even if duplicate cards are issued, the members will continue to be responsible for any loss arising from the inadvertent misuse of cards lost and the library will not accept any responsibility in this regard.

12. Loss of books issued, if any, should be reported to the librarian immediately. The borrower can replace the lost book as latest edition plus a fine fixed by the Principal. Otherwise double the cost of the current price of the book plus over due will be collected from the borrower.



13. General conditions of loan

1. All materials issued on loan will have to be returned on or before expiry of the due date. If not, fine will be collected at the rate of Re.1/- per day per book.
2. Students can renew the book for two times. If anybody reserves a particular book, renewal is not possible.

1. Reservation of books

Three books can be reserved when the books are in issue. Priority will be given to first come first serve basis.

2. Stock verification

At the time of stock verification, if any book is found to be lost, the total cost of the lost book will be collected from the students if found to be responsible for the loss.

IX. Hostel

The college management runs two hostels, one for men and the other for women, within the campus.

Hostel rules

1. The warden is vested with powers to regulate the hostel admission and to enforce general discipline in the hostels. The warden may refuse admission to any member and may dismiss any member without assigning any reason, if it is necessary for the smooth running of the hostel.
2. Inmates of the hostels should maintain strict discipline and at the time of admission will have to give an undertaking that they will abide by the rules and regulations of the hostel issued from time to time.
3. The Resident Tutor of a hostel will act as the local guardian of the inmates of that hostel.
4. No student is permitted to vacate the hostel without permission of his/her parents.
5. At the end of every year, the hostel membership is terminated and all the inmates will have to handover their room keys with the furniture, fittings etc. intact.
6. Admission to the hostel and the allotment of rooms for the subsequent year will start one day prior to the reopening of the College.
7. While going outside the hostel premises, the inmates should maintain discipline and keep up the prestige of the College. If complaints are received from public about misbehaviour, severe disciplinary action including expulsion from the hostel/college will be taken against the erring inmates.
8. Inmates are not permitted to organise any picnic or pleasure trip without the permission of the authorities. Any unauthorised meeting/activities will be viewed seriously.
9. Guests are not allowed to stay in hostels. Allotment of rooms shall be made by the warden.
10. The inmates are responsible for the care of the furniture and fittings in their respective rooms. For any loss or damage, the inmates will be penalised and the cost of such articles will be recovered from



them.

11. In addition to the mess bill, the inmates will have to remit the rent, electricity and water charges, establishment charges etc. as fixed by the management from time to time.
12. The monthly accounting period is from the 21st of a month to the 20th of the next month. The monthly bills will normally be displayed on the 28th of every month. Mess charges will be due from the date of publication of this bill. The inmates shall pay the mess charges and other charges, if any, within 10 days of the publication of the bill. Thereafter, a fine of Rs.5/- per day will be levied. Those who fail to pay the bill within 20 days of the publication will be declared as defaulters and they will not be permitted to dine in the mess. Further they have to pay a fine of Rs. 10/- per day till they clear the arrears.

13. A defaulter who .not settles the bill within 30 days of the publication of the bill will be expelled from the hostel and such inmate will be readmitted only after getting a personal undertaking from his! her parent. Re-admission fee may als'.) be collected from such intimate.
14. Members other than mess committee members shall not issue orders to the hostel employees or interfere with their work. Inmates shall not tip any employee of the hostel.

X. Additional Academic Facilities

It is proposed to conduct special classes in weak subjects as per the requirement of the students and classes to strengthen communication skills, personality development etc. outside the regular working days.



3

Kerala University Regulations

I. Condition for Admission

Candidates for admission to the B.Tech Degree courses shall be required to have passed the Plus Two or any other examination accepted by the University as equivalent thereto, with Mathematics, Physics & Chemistry as optional subjects and obtaining not less than 50% in Mathematics and 50% in Mathematics, Physics, Chemistry put together (or modified from time to time) subject to the usual concessions allowed for backward and other communities as specified from time to time.

II. Duration of the course

1. The course for the B.Tech Degree shall extend over a period of four academic years comprising of eight semesters. The first and second semester are combined.
2. Each Semester shall, ordinarily comprise of not less than 400 working periods each of 60 minutes.

III. Eligibility for the Degree

Candidates for admission to the Degree of Bachelor of Technology shall be required to have undergone the prescribed course of study in an Institution maintained by or affiliated to the Universities in Kerala State for a period of not less than four academic years of B.Tech (including practical, training and Project) and to have passed all the examinations specified in the scheme and conducted by this University.

IV. Subject of Study

The subjects of study shall be in accordance with the schemes and syllabi prescribed by the University

Electives

All students shall choose prescribed number of electives in the prescribed semesters from a prescribed set of electives offered by the Institution and as contained in the scheme.

V. Sessional Work

All sessional work shall be valued and marks awarded on the basis of day to day work, periodic tests and assignments (minimum of two each). The allocation of sessional marks by the college for individual subjects of each semester shall be on the following basis:

Theory Subjects	: Attendance 20%, Assignment 30%, Test 50%
Drawing	: Attendance 20%, Class work 40%, Test 40%
Practicals	: Attendance 20%, Class work 40%, Test 40%

PROJECT WORK

Work as assessed by Guide 50%.
Assessment by a member of the evaluation committee, out of which one member is a Guide 50%.

The sessional marks allotted for attendance (20%) for each subject (theory, practical or drawing) shall be awarded fully only if the candidate has secured 90% attendance in the subject. Proportionate reduction will



be made in the case of subjects in whom he gets below 90% of attendance for the subject.

present for a minimum of 50% of the total working periods.

VI. Examinations

- i. There shall be University Examination at the end of the first academic year and at the end of every semester from III semester onwards in subjects as prescribed under the respective scheme of examinations for B.Tech Degree course.
- ii. The students will be permitted to appear for the University examinations only if he satisfies the following requirements.
 - a) He must secure not less than 75% attendance in the total number of working periods during the first year and in each semester thereafter and shall be physically present for a minimum of 50% of the total working periods.
 - b) He must earn a progress certificate from the Head of the Institution of having satisfactorily completed the course of study in the semester/year as prescribed by these regulations
 - c) His conduct must have been satisfactory.
- iii. It shall be open to the Vice-Chancellor to grant condonation of shortage of attendance on the recommendation of the Head of the Institution in accordance with the following norms:
 - a) The attendance shall not be less than 60% of the total working periods
 - b) He shall be physically present for a minimum of 50% of the total working periods.
 - c) The shortage shall not be condoned more than twice during the entire course for B.Tech Degree.
 - d) The condonation shall be granted subject to the rules and procedures prescribed by the University from time to time.
 - e) The condonation for combined I and II semester will be reckoned as a single condonation for attendance purpose for B.Tech.
- iv. A student who is not eligible for condonation of shortage of attendance shall repeat the course when it is offered again. This provision is allowed only once in a semester.
- v. All examinations for all subjects (Theory, drawing and practical) will be conducted by the University for B.Tech Examinations.
- vi. Examination will be held twice in a year April/May and October/November. The schedule will not be changed for B.Tech Degree Course.

VII. Minimum for Pass

- a) A candidate shall be declared to have passed a semester/annual examination in full in the 1st appearance if he secures not less than 40% marks for each subject of the University Semester/annual examinations and not less than 50% of the overall aggregate marks for the semester/year, i.e. University examination marks and sessional marks of all the subjects



of the semester/year put together.

- b) A candidate shall be declared to have passed in an individual subject of a semester/annual examination if he secures not less than 40% marks for the subject in the University examination and not less than 50% of the total marks for the subject, i.e. University examination marks and sessional marks in that subject put together.
- c) A candidate who does not secure a full pass in a semester/annual examination as per clause (a) above, will have to pass in all the subjects of the semester as per clause (b) above, before he is declared to have passed in that semester examination in full.

VIII. Improvement of Marks

- i. A candidate shall be allowed to reappear for a maximum of three papers of a semester examination for B.Tech.
 1. The candidate shall be permitted to take the improvement examination only along with his first appearance for the next higher semester/annual examination.
 2. The candidate shall not be allowed to appear for an improvement examination for the subjects of the VII and VIII semesters for B.Tech.
 3. The marks obtained by the candidate for each subject in the improvement chance he/she has appeared for already existing marks- whichever is better will be reckoned as the marks secured.
- ii. A candidate shall be allowed to repeat the course work in one or

more semesters in order to better the sessional marks already obtained' subject to the following conditions

- a) He/she shall repeat all the subjects in that semester/year.
- b) He/she shall not combine this course work with his regular course work.
- c) He/she shall not be allowed to repeat the course work of any semester if he has already passed that semester examination in full.
- d) The sessional marks obtained by the repetition of course work in all subjects will be considered for all purposes.

- iii. A candidate shall be allowed to withdraw from the whole examination of a semester/ year in accordance with the rules for cancellation of examination in this University.

IX. Eligibility for Promotion and Completion of Course

- i. A student who have secured 75% attendance and has exhibited satisfactory progress in the class will be eligible for promotion to the next higher semester.
- ii. However before being admitted to the VI semester classes, the student should have passed all subjects in the combined I & II semester in full.
- iii. Similarly, before being admitted to the VII semester classes, the student should have passed all the subjects upto and including IV semester in full.



- iv. However he can register for the V semester University examination only if he/she passed fully the combined I & II semester examinations and he/she can register for the VII semester examination only if he/she has passed fully the III & IV semester examination also.

Note: As it is an academic prerequisite no exemption should be granted in this case whatever be the causes.

- v. A candidate shall complete the programme and pass all examinations within eight (8) years since his first admission to the B.Tech Programme.

X. Classification of Successful Candidates

- i. A candidate who qualifies for the degree passing all the subjects of the eight semesters within five academic years (ten consecutive semesters for B.Tech) after the commencement of his course of study and secures not less than **7.5 CGPA** (Cummulative Grade Point Average) of the aggregate of total marks of all eight semesters shall be declared to have passed the B.Tech Degree Examination in **FIRST CLASS WITH DISTINCTION**.
- ii. A candidate who qualifies for the degree passing all the subjects of the eight semesters within five academic years (ten consecutive semesters) after the commencement of his course of study and secures not less than 7.5 CGPA but not less than 6.0 CGPA of all the eight semesters shall be declared to have passed the B.Tech Degree Examination in **FIRST CLASS**.

- iii. All other successful candidates shall be declared to have passed the B.Tech examination in **Second Class**.
- iv. Successful candidates who complete the examination in four academic years (eight consecutive semesters) after the commencement of their course of study shall be ranked branch-wise on the basis of CGPA aggregate of total marks of all the eight semesters. Students who pass the examination in Supplementary Examination are also covered under this clause
- v. Total marks secured by the candidates in the University examinations and sessional for each year will be carried over to the next year. In case of subjects for which he has improved, the improvement marks (Written-Sessional) shall be carried over. In case of a subject in which the candidate has failed, the marks obtained at the successful attempt will be counted for carry over.

XI. Revision of Regulations:

The University may from time to time revise, amend or change the regulations, curriculum, and scheme of examinations and syllabi. The changes, unless specified otherwise, will have effect from the beginning of the academic year/semester following the notifications by the University.



4

Scheme of Studies & Examination

Scheme of Studies and Syllabus for Combined I and II Semesters (Common for all branches) 2009 Admission

Course No	Name of subject	Weekly load, hours			Max sessional marks	Exam Dur Hrs	Exam max marks	Credits
		L	T	D/P				
03.101	Engineering Mathematics	2	1	0	50	3	100	6
03.102	Engineering Physics	2	1	0	50	3	100	6
03.103	Engineering Chemistry	2	1	0	50	3	100	6
03.104	Engineering Graphics	1	0	2	50	3	100	6
03.105	Engineering Mechanics	2	1	0	50	3	100	6
03.106	Basic Civil Engineering	2	1	0	50	3	100	6
03.107	Basic Mechanical Engineering	2	1	0	50	3	100	6
03.108	Basic Electrical Engineering	2	1	0	50	3	100	6
03.109	Basic Electronics Engineering	2	1	0	50	3	100	6
03.110	Engineering Workshop	0	0	2	50	3	100	4
	TOTAL	17	8	4	500		1000	58

ELECTRICAL & ELECTRONICS ENGINEERING

Semester III

Course No	Name of subject	Weekly load, hours			Max sessional marks	Exam Dur Hrs	Exam max marks	Credits
		L	T	D/P				
03.301	Engineering Mathematics - II	3	1	0	50	3	100	4
03.302	Humanities	3	0	0	50	3	100	3
03.303	Hydraulic Machines & Heat Engines	2	1	0	50	3	100	3
03.304	Network Analysis & Synthesis	2	2	0	50	3	100	4
03.305	Introduction to Computers & Programming	2	1	0	50	3	100	3
03.306	Electrical Machines - I	2	2	0	50	3	100	4
03.307	Hydraulic Machines & Heat Engines Lab.	0	0	4	50	3	100	4
03.308	Electrical & Electronic Workshops	0	0	4	50	3	100	4
	Total	14	7	8	400		800	29

Semester IV

Course No	Name of subject	Weekly load, hours			Max sessional marks	Exam Dur Hrs.	Exam max marks	Credits
		L	T	D/P				
03.401	Engineering Mathematics - III	3	1	0	50	3	100	4
03.402	Solid State Devices & Circuits	2	2	0	50	3	100	4
03.403	Digital Electronics & Logic Design	2	1	0	50	3	100	3
03.404	Electrical Measurements - I	2	1	0	50	3	100	3
03.405	Engineering Materials Science	2	1	0	50	3	100	3
03.406	Power System Engineering - I	2	2	0	50	3	100	4
03.407	Electrical Drawing	0	0	4	50	3	100	4
03.408	Electrical Machines Lab - I	0	0	4	50	3	100	4
	Total	13	8	8	400		800	29

**Semester V**

Course No	Name of subject	Weekly load, hours			Max sessional marks	Exam Dur Hrs	Exam max marks	Credits
		L	T	D/P				
03.501	Engineering Mathematics - IV	3	1	0	50	3	100	4
03.502	Engineering Electro - Magnetics	2	1	0	50	3	100	3
03.503	Electrical Measurements - II	2	1	0	50	3	100	3
03.504	Power Electronics	2	2	0	50	3	100	4
03.505	Electrical Machines - II	2	1	0	50	3	100	3
03.506	Elective - I	3	1	0	50	3	100	4
03.507	Electronic Circuits Lab.	0	0	4	50	3	100	4
03.508	Measurements & Instrumentation Lab	0	0	4	50	3	100	4
	Total	14	7	8	400		800	29

List of Elective I:

1. Computer Architecture
2. Superconductivity and Applications
3. Operations Research
4. New and Renewable Sources of Energy

Semester VI

Course No	Name of subject	Weekly load, hours			Max sessional marks	Exam Dur Hrs	Exam max marks	Credits
		L	T	D/P				
03.601	Numerical Techniques & Computer Programming	2	2	0	50	3	100	4
03.602	Microprocessors & Applications	2	2	0	50	3	100	4
03.603	Electronic Instrumentation	2	1	0	50	3	100	3
03.604	Electrical Machines - III	2	1	0	50	3	100	3
03.605	Power System Engineering - II	2	1	0	50	3	100	3
03.606	Elective - II	3	1	0	50	3	100	4
03.607	Power Electronics Lab.	0	0	4	50	3	100	4
03.608	Microprocessors & Software Lab	0	0	4	50	3	100	4
	Total	13	8	8	400		800	29

List of Elective II:

1. Energy Conservation and Management
2. Biomedical Instrumentation (E)
3. Software Engineering

Semester VII

Course No	Name of subject	Weekly load, hours			Max sessional marks	Exam Dur Hrs	Exam max marks	Credits
		L	T	D/P				
03.701	Industrial Engg. & Management	2	1	0	50	3	100	3
03.702	Control Systems	2	2	0	50	3	100	4
03.703	Power System Engineering - III	2	1	0	50	3	100	3
03.704	Electronic Communication	2	1	0	50	3	100	3
03.705	Seminar & Project	0	0	4	50			4
03.706	Elective - III	3	1	0	50	3	100	4
03.707	Electrical Machines Lab. - II	0	0	4	50	3	100	4
03.708	Power System Lab.	0	0	4	50	3	100	4
	Total	11	6	12	400		700	29



List of Elective III:

1. Modern Operating Systems (Elective)
2. Computer Aided Power System Analysis
3. Robotics and Industrial Automations

Semester VIII

Course No	Name of subject	Weekly load, hours			Max sessional marks	Exam Dur Hrs	Exam max marks	Credits
		L	T	D/P				
03.801	Advanced Control Theory	2	1	0	50	3	100	3
03.802	Electrical Machine Design	2	2	0	50	3	100	4
03.803	Electrical System Design	2	2	0	50	3	100	4
03.804	Digital Signal Processing	2	1	0	50	3	100	3
03.805	Power Semiconductor Drives	2	1	0	50	3	100	3
03.806	Elective - IV	3	1	0	50	3	100	4
03.807	Project & Viva voce (Industrial Visits)	0	0	4	100	3	50	4
03.808	Systems & Control Lab.	0	0	4	50	3	100	4
	Total	13	8	8	450		750	29

List of Elective III:

1. Computer and Data Networks
2. Advanced Electronic Communication
3. High Voltage Engineering

ELECTRONICS & COMMUNICATION ENGINEERING

Semester III

Course No	Name of subject	Weekly load, hours			Max sessional marks	Exam Dur Hrs	Exam max marks	Credits
		L	T	D/P				
03.301	Engg. Mathematics II	3	1	0	50	3	100	4
03.302	Electrical Technology (TA)	2	1	0	50	3	100	3
03.303	Solid State Devices (TA)	3	1	0	50	3	100	4
03.304	Electronic Circuits I (TA)	3	1	0	50	3	100	4
03.305	Network Analysis (TA)	3	1	0	50	3	100	4
03.306	Programming In C++ (TA)	2	0	2	50	3	100	4
03.307	Electronic workshop (TA)	0	0	3	50	3	100	3
03.308	Electronic Devices Lab (TA)	0	0	3	50	3	100	3
	TOTAL	16	5	8	400		800	29

Semester IV

Course No	Name of subject	Weekly load, hours			Max sessional marks	Exam Dur Hrs	Exam max marks	Credits
		L	T	D/P				
03.401	Engineering Mathematics III	3	1	0	50	3	100	4
03.402	Humanities (TA)	3	0	0	50	3	100	3
03.403	Analog Communication (TA)	2	1	0	50	3	100	3
03.404	Signals And Systems (TA)	3	1	0	50	3	100	4
03.405	Electronic Circuits II (TA)	3	1	0	50	3	100	4
03.406	Digital Electronics (TA)	2	1	0	50	3	100	3
03.407	Programming & Simulation Lab(TA)	0	0	4	50	3	100	4
03.408	Electronic Circuits Lab (TA)	0	0	4	50	3	100	4
	TOTAL	16	5	8	400		800	29

**Semester V**

Course No	Name of subject	Weekly load, hours			Max sessional marks	Exam Dur Hrs	Exam max marks	Credits
		L	T	D/P				
03.501	Engineering Mathematics IV	3	1	0	50	3	100	4
03.502	Industrial Management (TA)	2	1	0	50	3	100	3
03.503	Linear Integrated circuits (TA)	2	1	0	50	3	100	3
03.504	Computer Organization (TA)	2	1	0	50	3	100	3
03.505	Applied Electromagnetic Theory (T)	3	1	0	50	3	100	4
03.506	Elective I	3	1	0	50	3	100	4
03.507	Digital Electronics Lab (TA)	0	0	4	50	3	100	4
03.508	Integrated Circuits Lab (TA)	0	0	4	50	3	100	4
	TOTAL	15	6	8	400		800	29

List of Elective I

1. Network Synthesis (TA)
2. Data Structures in C++ (TA)
3. Probability and Random Process
4. Java and Internet Programming (TA)
5. Digital Systems Design (TA)
6. Logic Synthesis (TA)
7. Electronic Product Design (TA)

Semester VI

Course No	Name of subject	Weekly load, hours			Max sessional marks	Exam Dur Hrs	Exam max marks	Credits
		L	T	D/P				
03.601	Digital Signal Processing (TA)	3	1	0	50	3	100	4
03.602	Microprocessors (TA)	3	1	0	50	3	100	4
03.603	Industrial Electronics & Instrumentation (T)	2	1	0	50	3	100	3
03.604	Digital Communication (T)	2	1	0	50	3	100	3
03.605	Antenna & Wave Propagation (T)	2	1	0	50	3	100	3
03.606	Elective II	3	1	0	50	3	100	4
03.607	Communication Engg. Lab (T)	0	0	4	50	3	100	4
03.608	Mini Project (TA)	0	0	4	50	3	100	4
	TOTAL	15	6	8	400		800	29

List of Elective II

1. Designing with VHDL (TA)
2. Linear Algebra and Applications in Electronics (TA)
3. Fuzzy Systems
4. Analog Circuits Design (TA)
5. Electronic Materials (TA)
6. Graph Theory (TA)
7. Artificial Intelligence & Expert Systems (TA)

Semester VII

Course No	Name of subject	Weekly load, hours			Max sessional marks	Exam Dur Hrs	Exam max marks	Credits
		L	T	D/P				
03.701	VLSI Circuit Design (TA)	3	1	0	50	3	100	4
03.702	Information Theory & Coding (T)	3	1	0	50	3	100	4
03.703	Microwave Engg. (T)	2	1	0	50	3	100	3
03.704	Control Systems (T)	2	1	0	50	3	100	3
03.705	Elective-III	3	1	0	50	3	100	4
03.706	Elective IV	3	1	0	50	3	100	4
03.707	Micro Processor .Lab (TA)	0	0	2	50	3	100	2
03.708	Digital Signal Processing Lab (T)	0	0	2	50	3	100	2
03.709	Project Design & Seminar(TA)	0	0	3	75+25	0	0	3
	TOTAL	16	6	7	500		800	29

List of Elective III

1. Image Processing (TA)
2. Speech Processing (TA)
3. Pattern Recognition (TA)
4. Quantum Computing (TA)



List of Elective IV

1. Advanced Microprocessor Architecture and Programming (TA)
2. Optoelectronic Devices (TA)
3. System Software (TA)
4. Discrete Event System Simulation (TA)
5. Microwave and Solid State Devices and Circuits (TA)

Semester VIII

Course No	Name of subject	Weekly load, hours			Max sessional marks	Exam Dur Hrs	Exam max marks	Credits
		L	T	D/P				
03.801	Optical Communication (T)	2	1	0	50	3	100	3
03.802	Radar & Television Engineering (T)	2	1	0	50	3	100	3
03.803	Computer Communication (T)	2	1	0	50	3	100	3
03.804	Satellite & Mobile Communication (T)	2	1	0	50	3	100	3
03.805	Elective V	3	1	0	50	3	100	4
03.806	Elective VI	3	1	0	50	3	100	4
03.807	Microwave & Optical Communication Lab (T)	0	0	4	50	3	100	4
03.808	Project & Viva- voce (TA)	0	0	5	150	3	100	5
	TOTAL	14	6	9	500		800	29

List of Elective V

1. MultiMate Systems & Wavelets (TA)
2. Integrated Optics and Photonic Systems (TA)
3. Software Architecture & Systems (TA)
4. Artificial Neural Networks (TA)
5. CDMA Systems (TA)

List of Elective VI

1. Adaptive Signal Processing
2. Embedded Systems (TA)
3. Microcontroller Based System Design (TA)
4. Communication Protocols (TA)
5. Biomedical Engineering (T)

COMPUTER SCIENCE & ENGINEERING

Semester III

Course No	Name of Subject	Weekly load Subjects			Maximum Sessional Marks	Exam Dur Hrs	Exam Max Marks	Credits
		L	T	D/P				
03.301	Engineering Mathematics II	3	1	0	50	3	100	4
03.302	Problem Solving and Programming in C (R,F)	2	2	0	50	3	100	4
03.303	Discrete Structures (R,F)	2	1	0	50	3	100	3
03.304	Electronic Circuits (R,F)	2	1	0	50	3	100	3
03.305	Logic System Design (R,F)	2	2	0	50	3	100	4
03.306	Control and Instrumentation	2	1	0	50	3	100	3
03.307	Electronic Circuits Lab (R,F)	0	0	4	50	3	100	4
03.308	Programming Lab	0	0	4	50	3	100	4
	Total	13	8	8	400		800	29

Semester IV

Course No	Name of Subject	Weekly load Subjects			Maximum sessional marks	Exam Dur Hrs	Exam Max Marks	Credits
		L	T	D/P				
03.401	Engineering Mathematics III	3	1	0	50	3	100	4
03.402	Humanities	3	0	0	50	3	100	3
03.403	Computer Organization (R,F)	3	1	0	50	3	100	4
03.404	Object Oriented Techniques (R,F)	2	1	0	50	3	100	3
03.405	Data Structures & Programming Methodology (R,F)	2	2	0	50	3	100	4
03.406	Database Design (R,F)	2	1	0	50	3	100	3
03.407	Data Structure Lab	0	0	4	50	3	100	4
03.408	Logic Design Lab	0	0	4	50	3	100	4
	Total	15	6	8	400		800	29



Semester V

Course No	Name of Subject	Weekly load subjects			Maximum sessional marks	Exam Dur Hrs	Exam Max Marks	Credits
		L	T	D/P				
03.501	Engineering Mathematics IV	3	1	0	50	3	100	4
03.502	Advanced Mathematics & Queuing Models (R,F)	3	1	0	50	3	100	4
03.503	Operating Systems (R,F)	2	1	0	50	3	100	3
03.504	Systems Programming (R,F)	2	1	0	50	3	100	3
03.505	Microprocessors and Interfacing (R,F)	2	1	0	50	3	100	3
03.506	Computer Hardware Design	3	1	0	50	3	100	4
03.507	Mini Project (OOP Lab)	0	0	4	50	3	100	4
03.508	Database Lab (R,F)	0	0	4	50	3	100	4
Total		15	6	8	400		800	29

Semester VI

Course No	Name of Subject	Weekly load subjects			Maximum sessional marks	Exam Dur Hrs	Exam Max Marks	Credits
		L	T	D/P				
03.601	Compiler Design (R,F)	2	1	0	50	3	100	3
03.602	Computer Communication (R,F)	2	1	0	50	3	100	3
03.603	Theory of Computation (R,F)	2	1	0	50	3	100	3
03.604	Computer Graphics	3	1	0	50	3	100	4
03.605	Advanced Microprocessors	3	1	0	50	3	100	4
03.606	Elective I	3	1	0	50	3	100	4
03.607	Microprocessor Lab	0	0	4	50	3	100	4
03.608	System Software Lab	0	0	4	50	3	100	4
Total		15	6	8	400		800	29

Elective I

1. Multimedia Systems
2. Digital Signal Processing
3. Simulation and Modeling
4. Software Project Management

Semester VII

Course No	Subject	Weekly load subjects			Maximum sessional marks	Exam Dur Hrs	Exam Max Marks	Credits
		L	T	D/P				
03.701	Computer Networks (R,F)	3	1	0	50	3	100	4
03.702	Algorithm Analysis and Design	2	1	0	50	3	100	3
03.703	Computer Peripherals and Interfacing	2	1	0	50	3	100	3
03.704	Principles of Programming Languages	2	1	0	50	3	100	3
03.705	Elective II	3	1	0	50	3	100	4
03.706	Elective III	3	1	0	50	3	100	4
03.707	Algorithm Design and Graphics Lab	0	0	4	50	3	100	4
03.708	Project Design and Seminar	0	0	4	100	-	-	4
Total		15	6	8	450		700	29

Elective II

1. Digital Image Processing
2. Natural Language Processing
3. Information System for Managers
4. Data Mining and ware housing

Elective III

1. E - Commerce
2. Computational Geometry
3. Advanced Data Base Management Systems
4. Computer Systems Design



Semester VIII

Course No	Subject	Weekly load subjects			Maximum sessional marks	Exam Dur Hrs	Exam Max Marks	Credits
		L	T	D/P				
03.801	Internet Technology	2	1	0	50	3	100	3
03.802	Computer Architecture & Parallel Processing	3	1	0	50	3	100	4
03.803	Software Engineering	2	1	0	50	3	100	3
03.804	Distributed Systems (R,F)	2	1	0	50	3	100	3
03.805	Elective IV	3	1	0	50	3	100	4
03.806	Elective V	3	1	0	50	3	100	4
03.807	Operating systems and Networking Lab	0	0	4	50	3	100	4
03.808	Project Work and Viva Voce	0	0	4	100	3	100	4
Total		15	6	8	450		800	29

Elective IV

1. Embedded Systems
2. Neural Computing
3. Cryptography and Networks Security
4. Real time Systems

Elective V

1. Artificial Intelligence and Expert System
2. Graph Theory
3. VLSI System Design
4. Wireless Networks

INFORMATION TECHNOLOGY

Semester III

Course No	Name of subject	Weekly load, hours			Max sessional marks	Exam Dur Hrs	Exam max marks	Credits
		L	T	D/P				
03.301	Engineering Mathematics II	3	1	0	50	3	100	4
03.302	Problem Solving and Programming in C (R,F)	2	2	0	50	3	100	4
03.303	Discrete Structures (R,F)	2	1	0	50	3	100	3
03.304	Electronic Circuits (R,F)	2	1	0	50	3	100	3
03.305	Logic System Design (R,F)	2	2	0	50	3	100	4
03.306	Basics of Computer Systems	2	1	0	50	3	100	3
03.307	Electronic Circuits Lab (R,F)	0	0	4	50	3	100	4
03.308	Programming Lab	0	0	4	50	3	100	4
Total		13	8	8	400		800	29

Semester IV

Course No	Name of subject	Weekly load, hours			Max sessional marks	Exam Dur Hrs	Exam max marks	Credits
		L	T	D/P				
03.401	Engineering Mathematics III	3	1	0	50	3	100	4
03.402	Humanities	3	0	0	50	3	100	3
03.403	Computer Organization (R,F)	3	1	0	50	3	100	4
03.404	Object Oriented Techniques (R,F)	2	1	0	50	3	100	3
03.405	Data Structures & Programming Methodology (R,F)	2	2	0	50	3	100	4
03.406	Data Base Design (R,F)	2	1	0	50	3	100	3
03.407	Data Structures Lab (R,F)	0	0	4	50	3	100	4
03.408	Object Oriented Programming lab	0	0	4	50	3	100	4
Total		15	6	8	400		800	29

**Semester V**

Course No	Name of subject	Weekly load, hours			Max sessional marks	Exam Dur Hrs	Exam max marks	Credits
		L	T	D/P				
03.501	Engineering Mathematics IV	3	1	0	50	3	100	4
03.502	Advanced Mathematics and Queuing Models (R,F)	3	1	0	50	3	100	4
03.503	Operating Systems (R,F)	2	1	0	50	3	100	3
03.504	Systems Programming (R,F)	2	1	0	50	3	100	3
03.505	Microprocessors and Interfacing (R,F)	2	1	0	50	3	100	3
03.506	Elective I	3	1	0	50	3	100	4
03.507	Digital Circuits Lab	0	0	4	50	3	100	4
03.508	Database Lab (R,F)	0	0	4	50	3	100	4
	Total	15	7	8	400		800	29

ELECTIVE I

1. Computer Hardware Design (R,F) (Common with Computer Science & Engg)
2. Computer Architecture
3. Design of Digital Systems

Semester VI

Course No	Name of subject	Weekly load, hours			Max sessional marks	Exam Dur Hrs	Exam max marks	Credits
		L	T	D/P				
03.601	Compiler Design (R,F)	2	1	0	50	3	100	3
03.602	Computer Communication (R,F)	2	1	0	50	3	100	3
03.603	Theory of Computation (R,F)	2	1	0	50	3	100	3
03.604	Internet Technology	3	1	0	50	3	100	4
03.605	Elective II	3	1	0	50	3	100	4
03.606	Elective III	3	1	0	50	3	100	4
03.607	Internet Lab	0	0	4	50	3	100	4
03.608	Mini Project	0	0	4	50	3	100	4
	Total	15	6	8	400		800	29

Elective II

- 03.605.1. Perl & Python
- 03.605.2. Software Project Management (Common with Computer Science & Engg - Elective I)
- 03.605.3. Software Architecture

Elective III

- 03.606.1. Multimedia Systems (Common with Computer Science & Engg - Elective I)
- 03.606.2. Computer Graphics (Common with Computer Science & Engg 03-604)
- 03.606.3. Bio Informatics

Semester VII

Course No	Name of subject	Weekly load, hours			Max sessional marks	Exam Dur. Hrs	Exam max marks	Credits
		L	T	D/P				
03.701	Computer Networks (R,F)	3	1	0	50	3	100	4
03.702	Internetworking	2	1	0	50	3	100	3
03.703	Software Testing	2	1	0	50	3	100	3
03.704	Web Applications Development	2	1	0	50	3	100	3
03.705	Elective IV	3	1	0	50	3	100	4
03.706	Elective V	3	1	0	50	3	100	4
03.707	Computer Networks Lab	0	0	4	50	3	100	4
03.708	Seminar /Project Design	0	0	4	100	0	0	4
	Total	15	6	8	450		700	29

Elective IV

1. Enterprise Resource Planning
2. Optical Networks

3. Mobile Computing

**ELECTIVE V**

1. Embedded Systems

2. Real time Systems

3. Network Programming

Semester VIII

Course No	Name of subject	Weekly load, hours			Max sessional marks	Exam Dur Hrs	Exam max marks	Credits
		L	T	D/P				
03.801	Enterprise Networking	3	1	0	50	3	100	4
03.802	E-Commerce	2	1	0	50	3	100	3
03.803	E-Security	2	1	0	50	3	100	3
03.804	Distributed Systems (R,F)	2	1	0	50	3	100	3
03.805	Elective VI	3	1	0	50	3	100	4
03.806	Elective VII	3	1	0	50	3	100	4
03.807	Web Applications Lab	0	0	4	50	3	100	4
03.808	Project & Viva voce	0	0	4	100	-	100	4
	Total	15	6	8	450		800	29

Elective VI

1. Cryptography
2. Virtual Reality Systems
3. Client Server Programming

Elective VII

1. Distributed Database
2. Data mining and Warehousing
3. Object Oriented Database Systems

MECHANICAL ENGINEERING**Semester III**

Course No	Name of subject	Weekly load, hours			Max sessional marks	Exam Dur Hrs	Exam max marks	Credits
		L	T	D/P				
03.301	Engineering. Mathematics - II	3	1	-	50	3	100	4
03.302	Humanities (MNPU)	3	0	-	50	3	100	3
03.303	Fluid Mechanics	3	1	-	50	3	100	4
03.304	Mechanics of Solids (MNPU)	3	1	-	50	3	100	4
03.305	Computer Programming & Applications (MN)	3	2	-	50	3	100	5
03.306	Machine Drawing - I	0	0	4	50	3	100	4
03.307	Civil Engg. Drawing & Estimation (MN)	0	0	3	50	3	100	3
03.308	Civil Engineering Lab (MN)	0	0	2	50	3	100	2
	Total	15	5	9	400		800	29

Semester IV

Course No	Name of subject	Weekly load, hours			Max sessional marks	Exam Dur. Hrs	Exam max marks	Credits
		L	T	D/P				
03.401	Engineering Mathematics - III	3	1	-	50	3	100	4
03.402	Thermodynamics (MU)	3	1	-	50	3	100	4
03.403	Hydraulic Machines	3	1	-	50	3	100	4
03.404	Theory of Machines (MU)	3	1	-	50	3	100	4
03.405	Electrical Technology (MU)	3	1	0	50	3	100	4
03.406	Machine Drawing II	0	0	3	50	3	100	3
03.407	Fluid Mechanics & Machines Lab (MN)	0	0	3	50	3	100	3
03.408	IC Engines Lab	0	0	3	50	3	100	3
	Total	15	5	9	400		800	29

**Semester V**

Course No	Name of subject	Weekly load, hours			Max sessional marks	Exam Dur Hrs	Exam max marks	Credits
		L	T	D/P				
03.501	Engineering Mathematics - IV	3	1	-	50	3	100	4
03.502	Thermal Engineering.	3	1	-	50	3	100	4
03.503	Dynamics of Machinery (MU)	3	1	-	50	3	100	4
03.504	Metallurgy & Material science(MNPU)	3	1	-	50	3	100	4
03.505	Manufacturing Process (MN)	3	1	-	50	3	100	4
03.506	Industrial Electronics	2	1	-	50	3	100	3
03.507	Machine shop I(MNU)	0	0	3	50	3	100	3
03.508	Electrical Lab*	0	0	3	50	3	100	3
	Total	17	6	6	400		800	29

Semester VI

Course No	Name of subject	Weekly load, hours			Max sessional marks	Exam Dur Hrs	Exam max marks	Credits
		L	T	D/P				
03.601	Heat & Mass Transfer	3	1	-	50	3	100	4
03.602	Design of Machine Elements - I	3	1	-	50	3	100	4
03.603	Computer Aided Design (MN)	2	1	-	50	3	100	3
03.604	Machine Tools (MN)	3	1	-	50	3	100	4
03.605	Principles of Management (MPU)	3	1	-	50	3	100	4
03.606	Elective - I	3	1	-	50	3	100	4
03.607	CAD Lab (MNU)	0	0	3	50	3	100	3
03.608	Machine shop II (MNU)	0	0	3	50	3	100	3
	Total	17	6	6	400		800	29

Elective I

1. Advanced mechanics of solids
2. New Energy systems
3. Object Oriented Programming
4. Nuclear Engineering
5. Foundry Technology
6. Mechanical working Methods
7. Internet Technologies
8. Artificial Intelligence Systems

9. System Modeling & Simulation

10. Instrumentation and control
11. Numerical. Methods
12. Non-conventional Machining Techniques
13. Tool Engineering
14. Composite Material Technology
15. Materials Handling
16. Agro Machinery

Semester VII

Course No	Name of subject	Weekly load, hours			Max sessional marks	Exam Dur Hrs	Exam max marks	Credits
		L	T	D/P				
03.701	Refrigeration & Air conditioning	3	1	-	50	3	100	4
03.702	Gas Dynamics	3	1	-	50	3	100	4
03.703	Design of machine Elements - II	3	1	-	50	3	100	4
03.704	Metrology & Instrumentation (MN)	3	1	-	50	3	100	4
03.705	Industrial Engineering(MPU)	2	1	-	50	3	100	3
03.706	Elective II	3	1	-	50	3	100	4
03.707	Thermal Engineering Lab	0	0	2	50	3	100	2
03.708	Mechanical Engineering Lab	0	0	2	50	3	100	2
03.709	Project & Seminar	0	0	2	100			2
	Total	17	6	6	500		800	29

Elective II

1. Glimpses of world thought
2. Computer Graphics
3. Advanced Thermodynamics
4. Industrial Heat Transfer
5. Plant Engg & Maintenance

6. Fracture Mechanics
7. Marketing Management.
8. Entrepreneurship
9. Industrial Hydraulics
10. Finite Element Methods



11. Metal Forming
12. Machine tool Technology
13. Turbo Machines
14. Macaronis
15. Experimental Methods in Engineering

16. Costing and cost Control
17. Non Destructive Testing
18. Precision Engineering.
19. Methods Engineering.

Semester VIII

Course No	Name of subject	Weekly load, hours			Max sessional marks	Exam Dur Hrs	Exam max marks	Credits
		L	T	D/P				
03.801	Energy Conversion & Management	3	1	-	50	3	100	4
03.802	Computer Integrated Manufacturing (MN)	3	2	-	50	3	100	5
03.803	Automobile Engineering	3	1	-	50	3	100	4
03.804	Seminar *	0	0	3	50	3	100	3
03.805	Elective III	3	1	-	50	3	100	4
03.806	Elective IV	3	1	-	100			4
03.807	Project & Viva voce	0	0	5	150		100	5
	Total	15	6	8	500		600	29

Elective III

1. Experimental Stress Analysis Techniques
2. Aerospace Engineering
3. Facilities Planning
4. Advanced Decision Modelling
5. Non linear Dynamics and Chaos
6. Design of jigs and fixtures
7. Environmental Pollution Control
8. Multiphase flow
9. Welding Technology
10. Advanced Fluid Mechanics

11. Controls in Machine tool
12. Design of Pressure Vessels & Piping
13. Tribology
14. Value Engineering.
15. Software Engineering
16. Cryogenic Engineering
17. Bio Medical Engineering.
18. Vehicle mechanics & Dynamics
19. Investment Analysis & Fin. Control
20. Failure analysis & Design

Elective IV

1. Propulsion Engineering
2. Industrial Refrigeration
3. Industrial Quality Control
4. Design of Heat transfer equipment
5. Creativity & Product Development
6. Computerised Materials Management
7. Random vibrations
8. Mech. Vibration & Noise Control
9. Advanced Kinematics of Machines
10. Financial Management

11. Flexible Manufacturing Methods
12. Computational Fluid Dynamics
13. Technology Forecasting
14. Management Information Systems
15. Production & Operations Management
16. Project Management
17. Design of IC Engines
18. Automation & Robotics
19. Surface Engineering.
20. Rapid Prototyping

CIVIL ENGINEERING

Semester III

Course No	Name of subject	Weekly load, hours			Max sessional marks	Exam Dur Hrs	Exam max marks	Credits
		L	T	D/P				
03.301	Engineering Mathematics II	3	1	0	50	3	100	4
03.302	Mechanics of Structures	3	1	0	50	3	100	4
03.303	Fluid Mechanics - I	3	1	0	50	3	100	4
03.304	Surveying - I	3	1	0	50	3	100	4
03.305	Building Materials & Construction	3	1	0	50	3	100	4
03.306	Engineering Geology	3	1	0	50	3	100	4
03.307	Building Drawing - I	0	0	3	50	3	100	3
03.308	Survey Practical - I	0	0	2	50	3	100	2
	Total	18	6	5	400		800	29

**Semester IV**

Course No	Name of subject	Weekly load, hours			Max sessional marks	Exam Dur Hrs	Exam max marks	Credits
		L	T	D/P				
03.401	Engineering Mathematics III	3	1	0	50	3	100	4
03.402	Humanities	3	0	0	50	3	100	3
03.403	Surveying II	3	2	0	50	3	100	5
03.404	Structural Analysis I	3	2	0	50	3	100	5
03.405	Fluid Mechanics II	3	1	0	50	3	100	4
03.406	Concrete Technology	3	1	0	50	3	100	4
03.407	Strength of Materials Lab	0	0	2	50	3	100	2
03.408	Fluid Mechanics Lab	0	0	2	50	3	100	2
	Total	18	7	4	400		800	29

Semester V

Course No	Name of subject	Weekly load, hours			Max sessional marks	Exam Dur Hrs	Exam max marks	Credits
		L	T	D/P				
03.501	Engineering Mathematics IV	3	1	0	50	3	100	4
03.502	Structural Analysis II	3	2	0	50	3	100	5
03.503	Building Drawing II	0	0	4	50	3	100	4
03.504	Housing, Architecture & Planning	3	1	0	50	3	100	4
03.505	Geotechnical Engineering I	3	1	0	50	3	100	4
03.506	Elective I	3	1	0	50	3	100	4
03.507	Survey Practical	0	0	2	50	3	100	2
03-508	Concrete Lab	0	0	2	50	3	100	2
	Total	16	6	8	400		800	29

Elective I

1. Advanced Surveying & Remote Sensing
2. Advanced Surveying & GPS approach

Semester VI

Course No	Name of subject	Weekly load, hours			Max sessional marks	Exam Dur Hrs	Exam max marks	Credits
		L	T	D/P				
03.601	Reinforced Concrete Structures	3	1	0	50	3	100	4
03.602	Programming & Numerical Methods	2	0	2	50	3	100	4
03.603	Quantity Surveying & Valuation	2	1	0	50	3	100	3
03.604	Geo-Technical Engineering II	3	1	0	50	3	100	4
03.605	Transportation Engineering I	3	1	0	50	3	100	4
03.606	Elective II	3	1	0	50	3	100	4
03.607	Water Resource Engineering I	3	1	0	50	3	100	4
03-608	Geotechnical Engineering Lab	0	0	2	50	3	100	2
	Total	19	6	4	400		800	29

Elective II

1. Advanced Computation Method
2. Site Investigation and Soil Testing
3. Earth & Rock fill Dams
4. Open Channel & Coastal Hydraulics
5. Modern Construction Materials
6. Wave Hydrodynamics

**Semester VII**

Course No	Name of subject	Weekly load, hours			Max sessional marks	Exam Dur Hrs	Exam max marks	Credits
		L	T	D/P				
03.701	Design of Steel Structures	3	1	0	50	3	100	4
03.702	Computer Method for Structural Analysis	3	0	2	50	3	100	5
03.703	Design of Hydraulic Structures	2		2	50	3	100	4
03.704	Transportation Engineering II	3	1	0	50	3	100	4
03.705	Environmental Engineering I	3	1	0	50	3	100	4
03.706	Elective III	3	1	0	50	3	100	4
03.707	Transportation Engineering Lab	0	0	2	50	3	100	2
03-708	a) Seminar / Project b) Survey Camp	0	0	2	50	3		2
	Total	17	4	8	400		700	29

Elective III

1. Reinforced Earth
2. Deep Foundations
3. Theory of Elasticity
4. Air Pollution Control
5. Traffic Engineering
6. Pre-Stressed Concrete
7. Design of Offshore Structures
8. Hydrology & Water Resources
9. Personnel Management
10. Introduction to Artificial Intelligence Methods

Semester VIII

Course No	Name of subject	Weekly load, hours			Max sessional marks	Exam Dur Hrs	Exam max marks	Credits
		L	T	D/P				
03.801	Design & Drawing of Reinforced Concrete Structures	2	0	2	50	3	100	4
03.802	Design & Drawing of Steel Structures	2	0	2	50	3	100	4
03.803	Construction Management	3	1	0	50	3	100	4
03.804	Environmental Engineering II	3	1	0	50	3	100	4
03.805	Elective IV	3	1	0	50	3	100	4
03.806	Elective V	3	1	0	50	3	100	4
03.807	Environmental Engineering Lab	0	0	2	50	3	100	2
03-808	Project / Viva / Industrial Visit	0	0	3	100	3	50	3
	Total	16	4	9	450		750	29

Elective IV

1. Ground Water Engineering
2. Design of Port, Harbour & Coastal Structures
3. Instrumentation for Engineering Measurement
4. Advanced Foundation Engineering
5. Experimental Stress Analysis
6. Pavements
7. Finite Element Analysis

Elective V

1. Special Foundations
2. Foundation on Expansive Soils
3. Industrial Water Pollution Control
4. Design of Bridges
5. Material Management
6. Transportation Planning
7. Optimisation Techniques in Engineering
8. Irrigation & Drainage Engineering

